

Sylvester Community Advisory Committee Meeting Minutes
Wednesday December 7th, 2022
9:00 a.m. – 10:30 a.m.

AGENDA

9:00 a.m.- 9:15 a.m.

Introductions and Statement of Recording and Review and approval of meeting minutes

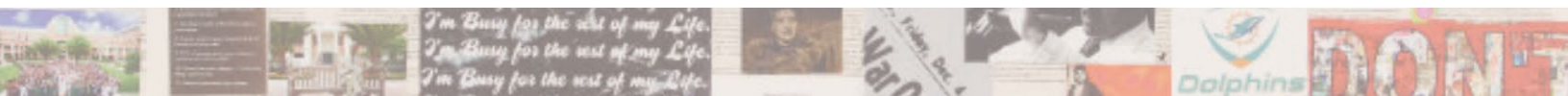
- Valerie Bethel, PhD, MBA/HCM, BSW called meeting to order 9:15 a.m.
- Introductions of members present at the meeting- **45 present**

Cassandra White SCCC	Blanca Ceballos United Homecare	Talli Mencion Easter Seals	Janae Turner Break the Cycle Inc.
Daniela Flores SCCC	Josette Josue SantLa Haitian Neighborhood Center	Justine Segrera UM	Shanada Monestime GO2 Foundation
Valerie Turner SCCC	Joanes St. Surin Gang Alternative	Laurie Varona FDOH	Judy Kline Dorsey Technical School
Islamiyat Nancy FDOH	Shaun Brothers SCCC	Scott Welford SCCC	Lluis Morey SCCC
Jasmine Jackson SCCC	Jouveline Belizaire SCCC	Lindsay Corrales SCCC	Lauren Whitmore SCCC
Jessica MacIntrye SCCC	Orlando Gonzales Save LGBTQ	Dorothy Graves SCCC	Nancy Elliot SCCC
Joe Baldelomar Alzheimer’s Foundation	Seth Berkowitz Leukemia & Lymphoma Society	Tiffinie Bratcher Aetna/CVS Health	Stephanie Butka
Kathleen Azor- Dessables FDOH	Lenise Banwarie FDOH	Candice Schottenloher FDOH	Imani Morgan FDOH
Rachelle Theodore CLT Strategic Solutions	Virginia Limage CLTB Solutions	Kim Sandmaier Gallagher	Alison Kerr FDOH
Richard Thurer UM	Kim-Phuong Truong-Vu UM	Lauren Nahodyl SCCC	Georgette Valls- Delgado American Cancer Society
Sandrah Chalmers SCCC	Corinne Ferrari SCCC	Erin Kobetz SCCC	Stephen Nimer SCCC
Tiffany Albury Health Council of South Florida			

9:15 a.m. – 9:25 a.m.

Opening Remarks

- Stephen D. Nimer, M.D expressed his appreciation for the feedback and participation of the CAC members from the last meeting. Dr. Nimer provided an overview of today’s meeting.



9:25 a.m. - 9:35 a.m.

Recap of Slido Feedback

- Valerie reviewed the Slido feedback from CAC members from 11/07 CAC meeting.

9:35 a.m. - 9:45 a.m. Presentation (Social Determinants of Health)

- Lauren Nahodyl presented Social Determinants of Health and the sources of data used to create the profiles for Scan360.
- Slido Questions
 - ✓ Which social determinants should be prioritized?
 - 8 responses
 - Education and access to healthcare were top responses.
- Briefly discussed the different committees within SCCC. Dr. Nimer shared that there also site group disease committees that CAC members can also be involved in. This will be further discussed at the next meeting.

9:45 a.m. – 10:00 a.m. Open Discussion on the direction of the CAC

- Valerie informed CAC members of the opportunities for members to lead the CAC as chairs and co-chairs. Interested members were directed to email Daniela Flores dflores@med.miami.edu

10:00 a.m. – 10:20 a.m. Committee Member Updates

- Shanada Monestime GO2 Foundation- wants to work together with CAC members in South Florida to increase lung screenings, how to develop timely treatment, and how to develop empowerment programs for patients (smonestime@go2foundation.org)
- Rachelle Theodore CLT Strategic Solutions- shared the organization developed a Health Equity curriculum and are ready to implement it in different settings. The curriculum is for providers or lay community member. The curriculum is 4 sessions. (cltstrategicsolutions@gmail.com)
- Joanes St. Surin Gang Alternative- shared the needs of the community the organization serves. (jstsurin@myga.org)
- Blanca Ceballos United Healthcare- shared the organization can assist older adults to apply for the Older American Acts Program (305-716-0710). They can also make referrals to alliance of aging for additional services. Also, shared about Avis Connect for high schools and Connect Tech Pals for college students and adults. These programs provide technology support and friendly companionship to older adults. The goal of this program is provide seniors and older adults to learn to use technology to access the world around them and feel less isolated. (bceballos@unitedhomecare.com)
- Janae Turner Break the Cycle Inc.- shared the different partnership events with SCCC in November and expressed gratitude for the continued partnership.

10:20 a.m. – 10:30 a.m. Meeting Evaluation and Adjournment



Action Items	Responsible Party	Due
Share the amount of the stipend for CAC chair and co-chair	Dorothy Graves	2/13/2023
Follow up with Blanca Ceballos from United Homecare	Valerie	2/13/2023
Share about the other committee opportunities including the SDG committees	Leadership	2/13/2023



Sylvester Community Advisory Committee 12/07

01 - 07 Dec 2022

Poll results

Which social determinant should be prioritized?

006

- Create focus groups to understand what the community wants to address. Every community needs are different.
- Healthcare access and education
- Health care access through patient navigators
- Healthcare access and education
- Access: transportation, health education, follow up and support.
- They are all priority. But I feel that one size does not fit all. We should assess each community to find out exactly what issue is most pressing. Many time it's a domino effect you cannot fix one and not the other
- Lack of education (awareness)
- It depends. I'd rather look at disease and condition first and then look at the social determinants in a community to find out where there are barriers.