

LEADERSHIP GREETINGS



Valerie Bethel,
PhD, MBA/HCM, BSW

Director, Research Support, Sylvester
Office of Outreach and Engagement

Wishing you joy, good health, and connection as we welcome the New Year. Thank you for being a part of our community. Here's to a season filled with cheer and awareness, especially during Cervical Cancer Awareness Month!



Nancy Elliott, PhD, MPA

Director, Research Support

Sending warm regards to you as a valued member of our community! Your support has been invaluable. Wishing you a promising New Year and heightened awareness during Cervical Cancer Awareness Month ahead!



Message from the Associate Director

Dear Changing The Game on Cancer Readers,

As we step into 2024, the excitement is palpable, and we're thrilled about the incredible journey that lies ahead. Your continued support and enthusiasm have been the heart of our community, and we can't wait to make this year unforgettable together.

Let's kick off the year by shining a spotlight on something truly important – January is Cervical Cancer Awareness Month! This month is a dedicated time to raise awareness about cervical cancer, its prevention, and the importance of regular screenings. By coming together and spreading knowledge, we can make a significant impact.

Cervical Cancer Awareness Month is a crucial time to educate ourselves and our loved ones about cervical cancer and its impact on women's health. According to the World Health Organization, cervical cancer is the fourth most common cancer in women globally, with more than half a million new cases and nearly 300,000 deaths each year. The good news is that cervical cancer is preventable and highly treatable, especially with early detection. This Cervical Cancer Awareness Month, let's come together to raise awareness about the importance of prevention and early detection. By sharing information and supporting one another, we can help save lives and make a difference in our communities.

Thank you for being part of our community, and we wish you a happy and healthy New Year!



Erin Kobetz, PhD, MPH

Chief Health Equity Officer + Vice President for Health Equity
Co-Director, Clinical Translational Research Institute
Associate Director, Community Outreach and Engagement, Sylvester
Comprehensive Cancer Center
John K. and Judy H. Schulte Senior Endowed Chair in Cancer Research



JANUARY CERVICAL CANCER AWARENESS MONTH

What is cervical cancer?

Cervical cancer happens when strange cells grow on the cervix, which is the lower part of the uterus.

How can you reduce your risk for cervical cancer?

- The **HPV vaccine** needs two to three shots, given over six to 12 months. It stops nine kinds of high-risk HPV, including HPV 16 and HPV 18.
- Children can get these shots when they are 9 to 11 years old.
- The CDC says the HPV vaccine can help women up to the age of 45.
- Stop smoking.



“
Cervical **pre-cancers** are diagnosed far **more often** than invasive cervical cancer.
”

Risk Factors for cervical cancer

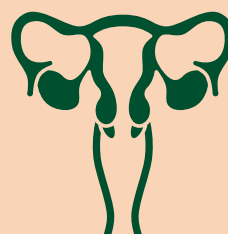
- **HPV+**
- **Sex before 18**
- **Many sexual partners**
- **Giving birth to 3 or more children**
- **HIV+**

Screening for cervical cancer

Screening is a process used to look for cancer in people who have no symptoms

- A Pap smear is when you or a doctor takes a small sample of cells from your cervix using a swab. These cells are sent to a lab to check for any strange or unusual cells. They also check for the HPV virus.
- Cervical cancer screening: every three years for women aged 21 to 29 years.
- Ages 30 to 65 years: every three years with a Pap smear alone, every five years with high-risk HPV testing alone, or every five years with HPV testing in combination with Pap smears.

FAST FACTS

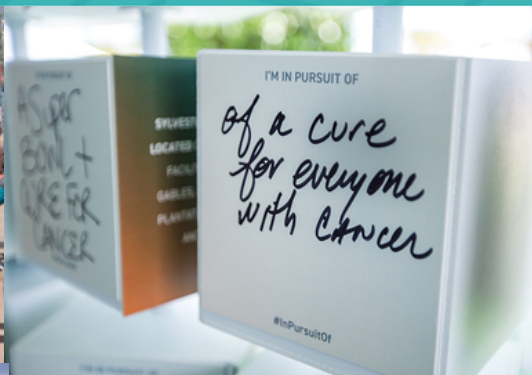


Getting the **HPV vaccine** might lower the risk of cervical cancer.



RIDE | RUN | WALK

DCC XIV | FEB 24, 2024 | RIDEDCC.COM



REGISTER TODAY!



Join the Miami Dolphins at DCC XIV At The Hard Rock Stadium On February 24, 2024

Dolphins Challenge Cancer (DCC) is a signature Miami Dolphins initiative and the #1 fundraising event in the NFL. 100% of all funds raised directly support ground-breaking research at Sylvester Comprehensive Cancer Center.

The DCC's purpose is to improve people's lives through financial support for innovative cancer research at Sylvester, South Florida's only National Cancer Institute (NCI) designated cancer center.



TEAM SPOTLIGHT CORNER



As we step into 2024, a year filled with anticipation, our journey continues with even more thrilling developments and ambitious projects. The dedication of individuals within our team has been the driving force behind our success, defining us as true Game Changers in our catchment area. The collective efforts of both seasoned and new team members propel us forward, and we are excited about the impactful strides we will make together. Our unwavering commitment to excellence and innovation has earned us the respect and admiration of our peers and clients. As we reflect on our achievements thus far, we are humbled by the trust and confidence that our community have placed in us. We are determined to continue delivering exceptional results and exceeding expectations.



Scan to stay connected with all the Sylvester Game Changer vehicle Events










Sylvester Cancer Center: Continuing to Pioneer Excellence in Cancer Research and Innovation

In 2019, Sylvester Comprehensive Cancer Center achieved the coveted National Cancer Institute (NCI) designation, standing out as the sole NCI-designated cancer center in South Florida and one of just 71 nationwide. This recognition highlights Sylvester's dedication to cutting-edge research in cancer prevention, diagnosis, and treatment. Currently in the redesignation process, Sylvester remains committed to elevating its research programs. The focus is on enhancing the social and translational aspects, fostering growth in shared research resources, and launching a developmental therapeutics program. These efforts showcase Sylvester's unwavering commitment to excellence. This redesignation journey emphasizes Sylvester's continuous pursuit of the highest standards in cancer research. Prioritizing social and translational aspects ensures a comprehensive approach to addressing cancer challenges and improving patient outcomes.



Game Changer Event Bulletin

- 
Saturday, January 20, 2024
12:00 pm - 5:00 pm
Cancer Prevention, Detection, and Wellness Summit @ Pride Center
- 
Saturday, January 20, 2024
8:00 am - 12:00 pm
Waves of Hope BRCAStrong's 2nd Annual 5k
- 
Monday, January 22, 2024
10:00 am - 1:30 pm
Vaccine Event in the Upper Keys
- 
Monday, January 22, 2024
11:00 am - 2:00 pm
Hagen Ranch Road Branch Library
- 
Saturday, January 27, 2024
10:00 am - 4:00 pm
The Canes Care Health and Resource Fair
- 
Monday, January 29, 2024
12:00 pm - 4:00 pm
Glades Road Branch Library
- 
Tuesday, January 30, 2024
2:30 pm - 7:30 pm
Sheridan Technical College Pap Test Screening

OUTREACH DATA REPORT



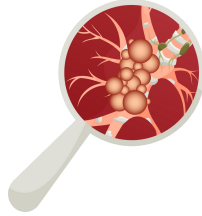
The Office of Outreach and Engagement's Impactful Journey in 2023

In 2023, the Office of Outreach and Engagement achieved impactful community engagement through strategic initiatives, paving the way for continued success in 2024. Let's take a look at all the great work we have completed throughout our catchment area last year

NUMBER OF PARTICIPANTS SCREENED

2023

ALL COUNTIES



983
TOTAL

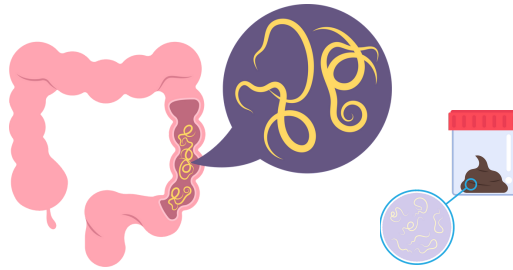
TOTAL NUMBER OF REACH



88,557
TOTAL

COLORECTAL CANCER SCREENINGS

366
TOTAL



Did you know? Getting screened to remove precancerous growths or polyps is the best way to reduce your risk for colorectal cancer which is the second main cause for cancer-related deaths in the United States.

CERVICAL CANCER SCREENINGS

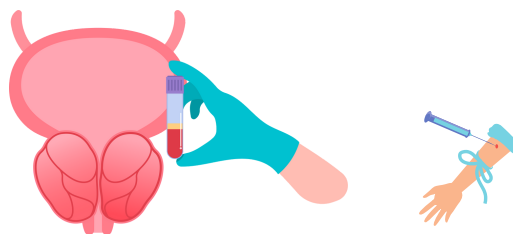
253
TOTAL



Did you know? The most common cause of cervical cancer is human papillomavirus (HPV) infection. Screening is recommended between ages 21 to 65, while HPV vaccinations can be given as young as age 9 and up to age 45.

PROSTATE CANCER SCREENINGS

414
TOTAL



#DidYouKnow When prostate cancer is detected early through screening, it becomes 98% treatable. However, if it's found late, the chances of survival decrease. Those at high risk are recommended to begin screening at 45. Getting checked early can make a big difference!

Revolutionizing Multiple Myeloma Care: Sylvester Unveils Groundbreaking Personalized Treatment Prediction Model

In a major leap forward, Sylvester researchers introduce the groundbreaking Individual Risk Model for Myeloma (IRMMa), marking the first-ever individualized prediction tool for Multiple Myeloma. Led by C. Ola Landgren, M.D., Ph.D., and Francesco Maura, M.D., the Sylvester research team collaborated to harness the power of machine learning, offering a new era of precision medicine that tailors treatment decisions based on each patient's unique tumor genomics and response history. The IRMMa model promises to enhance predictions for treatment response and prognosis, paving the way for a more personalized and effective approach to Multiple Myeloma care.

Dr. Landgren emphasizes the need for improved prediction tools in multiple myeloma, given the expanding array of treatments available. The IRMMa model, built using machine learning, outshines previous prognostic tools by focusing on individual tumor genetics alongside treatment outcomes. Its ability to adapt and improve with additional data makes it a promising tool for the future.

To gather such a large dataset, the researchers needed a large set of collaborators. The Sylvester team worked with scientists at Memorial Sloan Kettering Cancer Center, NYU Langone Health, Moffitt Cancer Center, and Heidelberg University Hospital, the model is accessible online for utilization, with its current focus primarily on researchers rather than clinicians, according to Francesco Maura, M.D., an assistant professor at Sylvester and the first author of the study.

This tool has the potential to assist researchers in interpreting or crafting new clinical trials by offering a substantial array of comparisons to experimental treatments. Dr. Maura and his team are also working towards enhancing the model by incorporating additional patient data.

The researchers collected data from nearly 2,000 newly diagnosed multiple myeloma patients, identifying 90 crucial "driver genes" and analyzing treatment outcomes based on genetic sequences. The result, IRMMa, boasts enhanced predictive capabilities and the flexibility to incorporate evolving datasets and emerging treatment strategies.

Unlike previous tools that relied on average population data, IRMMa shifts the focus to predicting individual patient risks, considering the unique biology of each patient's tumor. It identifies 12 distinct subtypes of multiple myeloma, a classification previously undiscovered.

This dual-pronged study represents a significant leap forward in our comprehension of multiple myeloma. The genomic classification provides a fresh perspective on the molecular landscape, while the individualized prediction model holds promise for more accurate prognostication. Together, these findings pave the way for a new era in the diagnosis and management of this complex hematological malignancy.



Carl Ola Landgren, MD., Ph.D

Professor of Medicine
 Chief, Division of Myeloma, Department of Medicine
 Director, Sylvester Myeloma Institute
 Co-Leader, Translational and Clinical Oncology Program
 Paul J. DiMare Endowed Chair in Immunotherapy

CAC MEMBER SPOTLIGHT: ELEVATING ACHIEVEMENTS IN OUR COMMUNITY NEWSLETTER

Are you apart of the CAC (Community Advisory Committee) seeking an opportunity to showcase your organization? We are excited to introduce the CAC Member Spotlight, a dedicated segment in our newsletter designed to highlight the diverse and impactful work carried out by our valued members. If your organization has a compelling story, innovative projects, or noteworthy achievements that you believe should be shared with the community, we encourage you to express your interest in being featured.

This is an excellent chance to increase visibility, foster connections, and inspire collaboration within the CAC network. Reach out to us to express your interest, and let your organization's accomplishments shine in the CAC Member Spotlight segment of our newsletter. Together, we can celebrate the collective contributions that make our community thrive.

